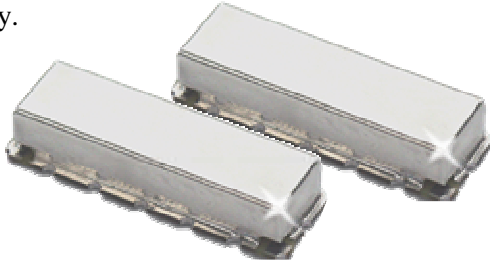


# KR 2432 Series Highpass Filter

## General Description

KR 2432 series are surface mount highpass filter. Passband frequencies from 5 MHz to 500 MHz are available. Please consult the factory.



## Features

- Surface Mount Package
- Sharp Transition to Stopband
- 50 dB Stopband
- 50  $\Omega$  Source and Load

## Typical Performance

**Overall Response for  $F_c = 110$  MHz**  
(10 dB/div)

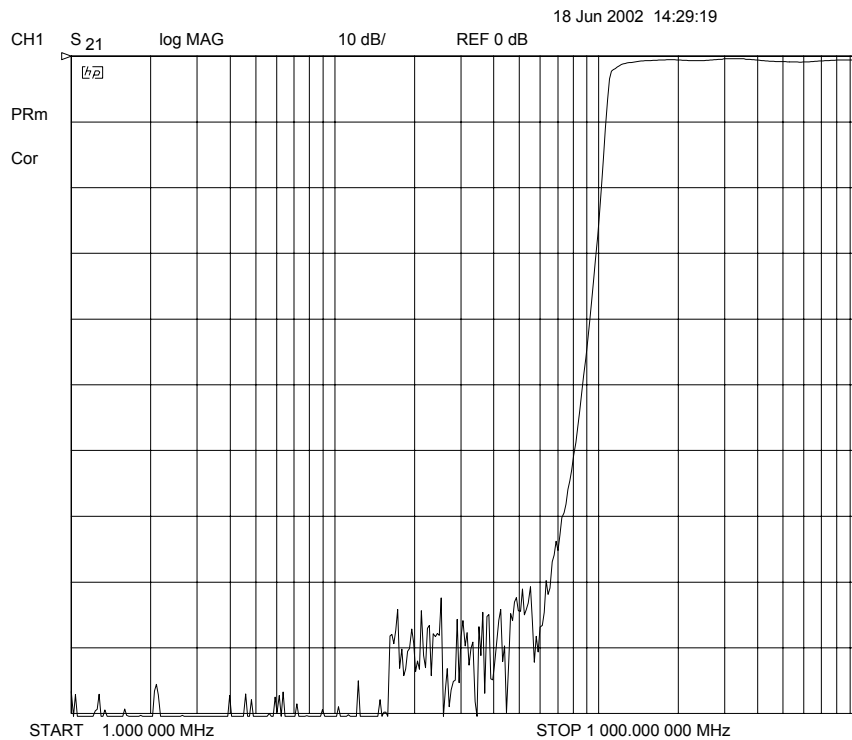


Figure 1

KR Electronics, Inc.  
91 Avenel Street  
Avenel, NJ 07001

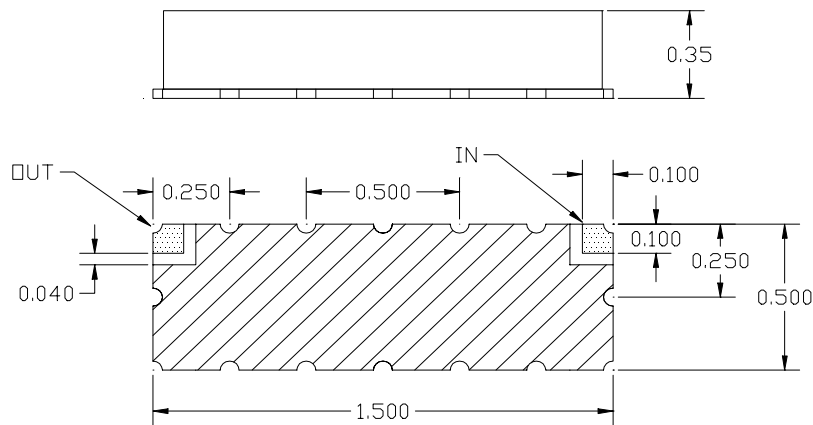
Web [www.krfilters.com](http://www.krfilters.com)  
Email [sales@krfilters.com](mailto:sales@krfilters.com)  
Phone (732) 636-1900  
Fax (732) 636-1982

# KR 2432 Series Highpass

## Specifications

| Parameter                | Specification    |         |
|--------------------------|------------------|---------|
| Filter type              | Highpass         |         |
| End of Passband ( 3 dB)  | 5 MHz to 500 MHz | Specify |
| Attenuation at 0.77 x Fc | ≈ 50 dB          |         |
| Source and Load          | 50 Ω             |         |
|                          |                  |         |
|                          |                  |         |
|                          |                  |         |
|                          |                  |         |
|                          |                  |         |

## Physical Dimensions



### Notes:

1. Surface mount package — Metal cover, open frame
2. Dimensions in inches
3. Use SN60 or SN63 solder during installation
4. If boards are cleaned after installation, units must be completely dried to remove any entrapped moisture that will effect electrical performance