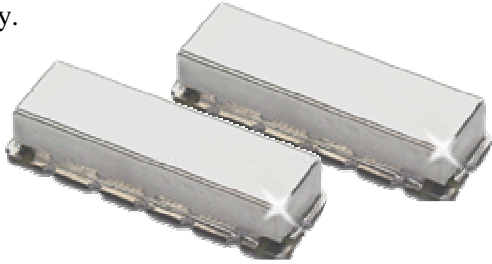


# KR 2433 Series Lowpass Filter

## General Description

KR 2433 series are surface mount lowpass filters. Passband frequencies from 5 MHz to 500 MHz are available. Please consult the factory.



## Features

- Surface Mount Package
- Passband from 5 MHz to 500 MHz
- Sharp Transition to Stopband
- 60 dB Stopband
- 50 Ω Source and Load

## Typical Performance Fc = 400 MHz shown

**Passband Amplitude & Group Delay**  
(1 dB/div and 2 nsec/div)

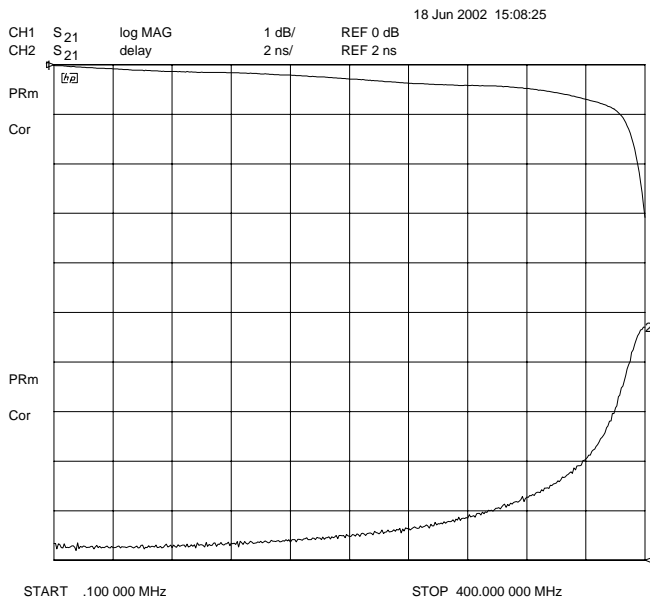


Figure 1

**Overall Response**  
(10 dB/div)

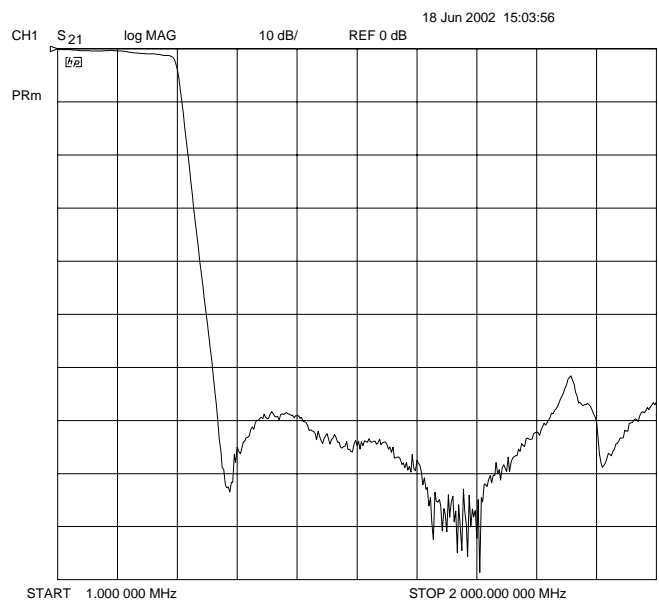


Figure 2

KR Electronics, Inc.  
91 Avenel Street  
Avenel, NJ 07001

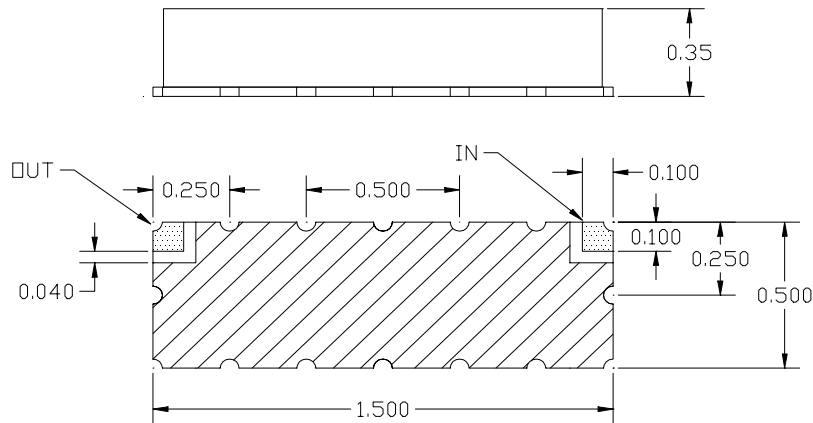
Web www.krfilters.com  
Email sales@krfilters.com  
Phone (732) 636-1900  
Fax (732) 636-1982

# KR 2433 Series Lowpass

## Specifications

Parameter	Specification	
Filter type	Lowpass	
End of Passband Fc ( 3 dB)	5 MHz to 400 MHz	Specify
Attenuation at 1.055 x Fc	12 dB ± 2 dB	
Attenuation at 1.305 x Fc	> 54 dB	
Attenuation at 1.835 x Fc	> 60 dB	
Source and Load	50 Ω	

## Physical Dimensions



### Notes:

1. Surface mount package — Metal cover, open frame
2. Dimensions in inches
3. Use SN60 or SN63 solder during installation
4. If boards are cleaned after installation, units must be completely dried to remove any entrapped moisture that will effect electrical performance